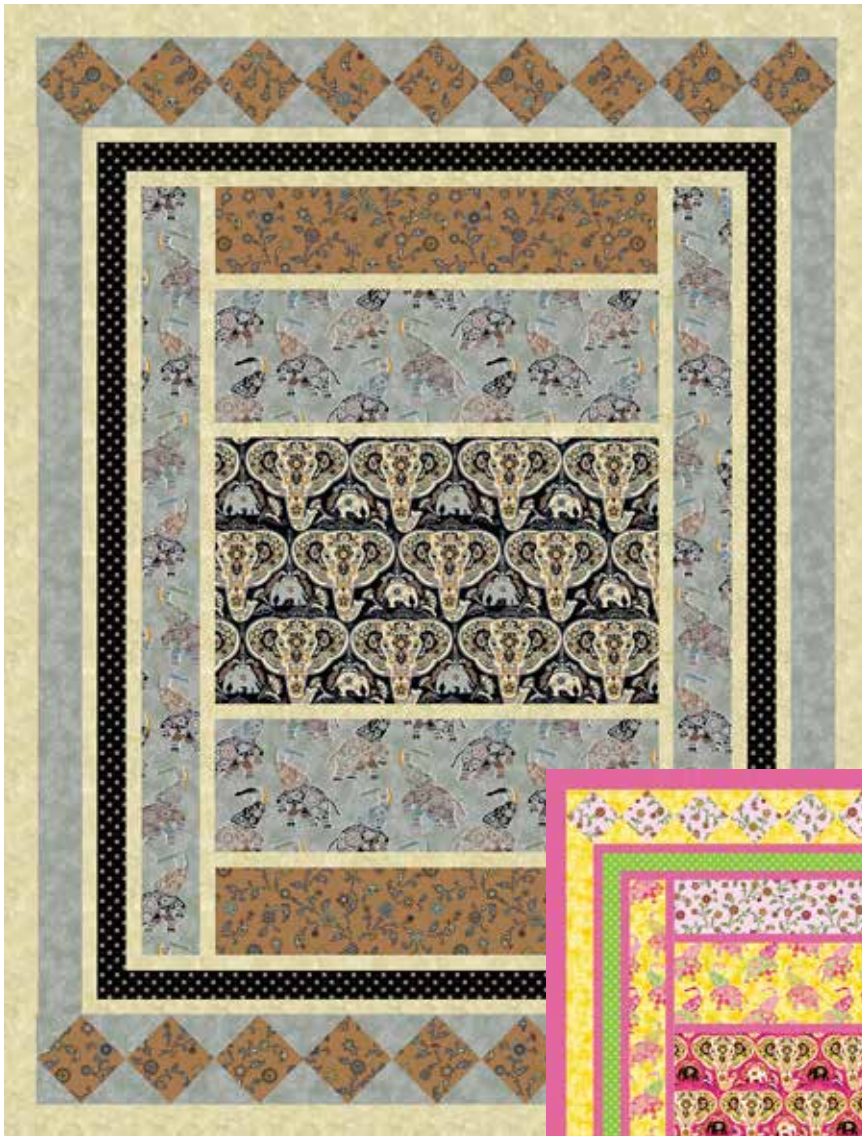


Bombay

BY SUITE 1500



Elephant Walk Quilt
designed by:
Jean Ann Wright

Quilt Size: **58" x 76"**

andoverfabrics.com



About Bombay

Achieve quilting nirvana with this visionary collection of prints. Featuring Indian elephants and delightful floral embellishments, Bombay offers a truly transcendent sewing experience.

andover



makower uk
The Henley Studio

Free Pattern Download Available

1384 Broadway New York, NY 10018
Tel. (800) 223-5678 • andoverfabrics.com

Elephant Walk Quilt



Introducing Andover Fabrics new collection: **BOMBAY** by Suite 1500

Quilt designed by Jean Ann Wright

Quilt finishes 58" x 76"

18 Blocks: 6" x 6"

Exotic prints inspired by eastern Indian textiles are the focus of this lovely quilt. Elephants, paisleys, and stylized florals in three color ways present several options for a quilt that is easy to stitch.

Fabric Requirements

		Yardage	Black	Blue	Pink
Fabric A	bsetting	5/8 yard	8049-K	8049-B	8049-E
Fabric B	setting	2 yards	8050-KC	8050-B	8050-EY
Fabric C	setting	1 yard	8051-KN	8051-B	8051-E
Fabric D	border	1/2 yard	8052-K	8052-BP	8052-EG
Fabric E	border	2 yards	8053-KC	8053-B	8053-EY
*Fabric F	sashes	2 1/4 yards	1867-L	1867-B3	1867-E1
Backing		3 3/4 yards	8050-KC	8050-B	8050-EY

*includes binding

Cutting Directions

Note: Read assembly directions before cutting patches. All measurements are cut sizes and include 1/4" seam allowances. Borders and strips are cut the exact lengths required plus 1/4" seam allowances. WOF designates the width of fabric from selvedge to selvedge (approximately 42" wide).

Fabric A Cut (1) rectangle 18 1/2" x 30 1/2", cut crosswise

Fabric B Cut (2) borders 4 1/2" x 52 1/2", cut lengthwise
Cut (2) rectangles 9 1/2" x 30 1/2", cut crosswise

Fabric C Cut (2) rectangles 6 1/2" x 30 1/2"
Cut (18) squares 6 1/2" x 6 1/2"

Fabric D Cut (2) side borders 2 1/2" x 54 1/2", cut crosswise and pieced
Cut (2) top/bottom borders 2 1/2" x 46 1/2", cut crosswise and pieced

Fabric E Cut (2) borders 3 1/2" x 60 1/2", cut lengthwise
Cut (72) squares 3 1/2" x 3 1/2"

Fabric F Borders/sashes are listed in the order they are used in quilt.

Cut borders and sashes lengthwise.

Cut (4) sashes 1 1/2" x 30 1/2"

Cut (4) side borders 1 1/2" x 52 1/2"

Cut (2) t/b borders 1 1/2" x 42 1/2"

Cut (2) side borders 1 1/2" x 58 1/2"

Cut (2) t/b borders 1 1/2" x 48 1/2"

Cut (2) side borders 2 1/2" x 72 1/2"

Cut (2) t/b borders 2 1/2" x 58 1/2"

Cut (4) strips binding 2 1/2" x 70", cut lengthwise

Backing Cut (2) panels 42" x 66", pieced to fit quilt top with overlap on all sides

Elephant Walk Quilt

Making the Quilt

1. Draw a diagonal line from corner to corner on the wrong side of each $3\frac{1}{2}$ " Fabric E square. Referring to Diagram 1, place a marked square on a Fabric C $6\frac{1}{2}$ " square, right sides together, aligning raw edges at the corner. Stitch on the drawn line; trim away and discard excess fabric. Press open. Repeat on the remaining corners, watching orientation of the sewing (Diagram 2). Make 18 blocks.

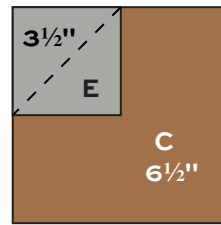


Diagram 1

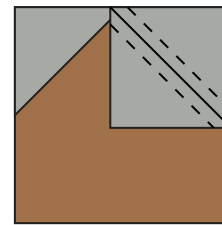
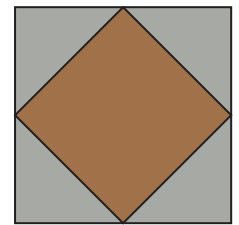


Diagram 2



Block - Make 18

2. Referring to the Quilt Diagram, sew a $1\frac{1}{2}$ " x $30\frac{1}{2}$ " Fabric F sash to opposite sides of the Fabric A rectangle. Sew Fabric B rectangles to the top and bottom. Join Fabric F sashes to the top and bottom, and then join Fabric C rectangles to top and bottom. Press seam allowances toward the sashes.

3. Sew a Fabric F $52\frac{1}{2}$ " border to each side of a Fabric B border. Repeat. Sew borders to sides of quilt. Sew Fabric F $42\frac{1}{2}$ " borders to top and bottom.

4. Sew Fabric D $54\frac{1}{2}$ " borders to the sides. Join Fabric D $46\frac{1}{2}$ " borders to the top and bottom.

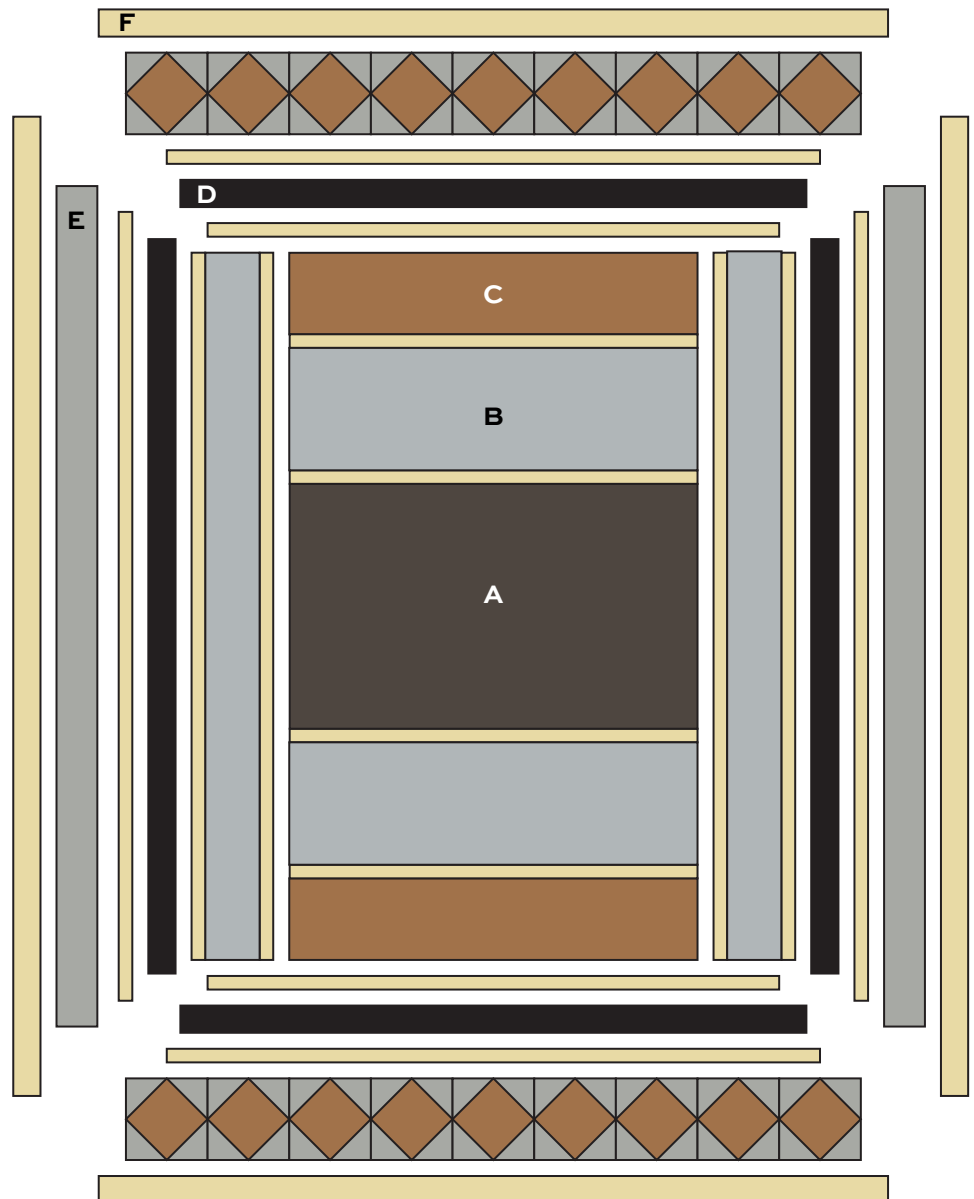
5. Join Fabric F $58\frac{1}{2}$ " borders to the sides and $48\frac{1}{2}$ " borders to top and bottom.

6. Sew Fabric E borders to the sides. Join 9 blocks to make a block border. Repeat. Sew to the top and bottom of the quilt.

7. Join Fabric F $72\frac{1}{2}$ " borders to the sides. Join $58\frac{1}{2}$ " borders to the top and bottom.

Finishing the Quilt

8. Layer the quilt with batting and backing and baste. Quilt in the ditch around borders and block patches. Quilt around the printed motifs in the rectangles. Bind to finish the quilt.



Quilt Diagram

Bombay

BY SUITE 1500



8049-B



8049-E



8049-K



8050-B



8050-EY



8050-KC



8051-B



8051-E



8051-KN



8052-BP



8052-EG



8052-K



8053-B



8053-EY



8053-KC

All fabrics are used in quilt pattern. Fabrics shown are 25% of actual size.

andover

makower uk
The Henley Studio

Free Pattern Download Available

1384 Broadway New York, NY 10018
Tel. (800) 223-5678 • andoverfabrics.com