

# We'll Always Have Paris

Quilt Designed by eQuilter



53" x 59"

**Skill Level:** Confident Beginner**Finished Quilt Size:** 53" x 59"

*Please read all instructions before beginning. Pre-washing recommended for hand dye only.  
Pre-washing NOT recommended for other fabrics.*

## Yardages and Cutting

*WOF is width of fabric from selvage edge to selvage edge. Remove as little fabric as possible when removing selvages and squaring strip ends.*

### Vintage Paris panel

- Trim to 34" wide x 40 1/2" tall.

### 1 yard pink Paris

- Fussy-cut (14) 6 1/2" squares, centering a motif in each square.

### 1 yard blue Paris

- Fussy-cut (16) 6 1/2" squares, centering a motif in each square.

### 1 yard lavender hand dye

- 6 strips 3" x WOF for outer border.
- 4 strips 1 3/4" x WOF; trim to 2 strips each 40" and 36 1/2" for panel framing.

### 5/8 yard blue stars

- 6 strips 2 1/4" x WOF for binding.

### 1 1/4 yards white butterflies

- 10 strips 3 1/2" x WOF; cut into (120) 3 1/2" squares.

### 4 1/4 yards 44/45" backing fabric

- 2 strips 75" x WOF

### OR

### 2 yards wide backing fabric

- 1 piece 69" x 75"

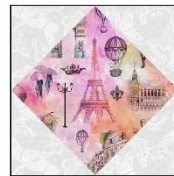
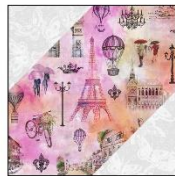
### Batting

- 1 piece 69" x 75"

## Completing the Quilt

*Use a 1/4" seam allowance for all stitching. Press seams as directed. Refer to the exploded quilt diagram as needed.*

1. Draw a diagonal line from corner to corner on the wrong side of the white squares.
2. Place marked squares right sides together on the top left and bottom right corners of a pink Paris square. Sew on the lines. Trim seam allowances 1/4" out from the stitching. Press the white triangles open with seam allowance toward the triangles. Repeat on the 2 remaining corners of the pink Paris square to make (1) 6 1/2" x 6 1/2" pink Paris unit, **except** press seam allowances toward the pink Paris square.
3. Repeat to make 14 pink Paris units. Repeat with blue Paris squares to make 16 blue Paris units.



**Pink Paris Unit — Make 14**

**Blue Paris Unit — Make 16**

4. Sew the 1 3/4" x 40" pink/purple strips to the sides of the panel. Press seams toward the strips. Add the 1 3/4" x 36 1/2" strips to the sides to complete the 42 1/2" x 36 1/2" framed panel. Press seams toward the strips.
5. Sew 4 blue Paris units and 3 pink Paris units top to bottom, alternating units and offsetting seam allowances, to make a 6 1/2" x 42 1/2" side strip. Press seams open. Repeat to make a second side strip. Stitch the strips to sides of the framed

6. Stitch 2 blue Paris units side to side. Press seam open. Add a pink Paris unit, then a blue Paris unit, and then a pink Paris unit to both sides to complete the 6 1/2" x 48 1/2" top strip. Press seams open. Repeat to make the bottom strip. Sew the strips to the top and bottom of the framed panel to complete the 48 1/2" x 54 1/2" quilt center. Press seams toward the framed panel.

7. Stitch the 3" x WOF lavender strips short ends together to make a long strip. Press seams to one side. Cut into 2 strips each 53 1/2" and 54 1/2". Sew the 54 1/2" strips to the sides of the quilt center and the 53 1/2" strips to the top and bottom to complete the top. Press seams toward the strips.

8. If using 44/45" backing fabric, remove the selvage edges from the backing pieces. Join the pieces on the long edges with a 1/2" seam allowance. Press seam open. Trim to make the 69" x 75" backing piece.

9. Layer the quilt top with the backing and batting pieces. Quilt as desired. Trim batting and backing even with the top.

10. Join the blue stars binding strips on the short ends with diagonal seams to make a long strip. Press seams open. Press the strip in half along the length with wrong sides together.

11. Bind the quilt edges using your favorite method to complete the quilt.

