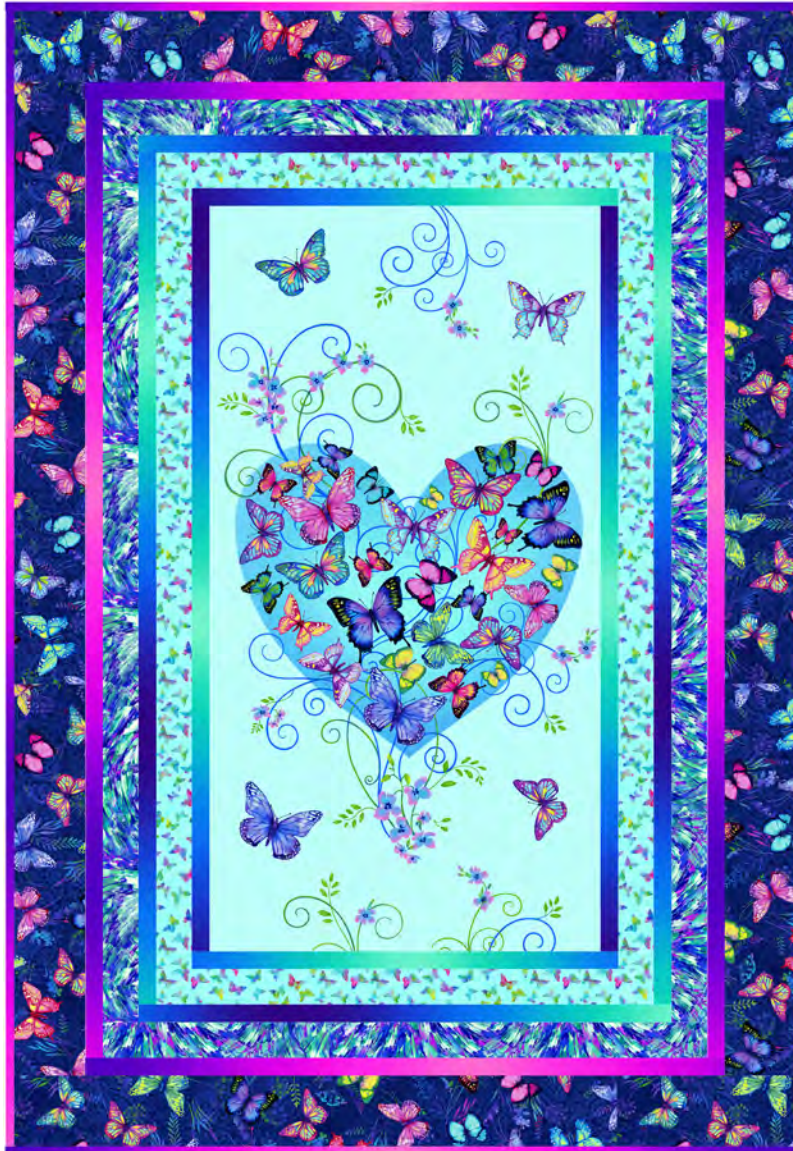


Free Project
NOT FOR RESALE

QUILT 1

Butterfly Paradise

by Elizabeth Isles



Featuring fabrics from the **Butterfly Paradise** collection from **STUDIO fabrics**

Fabric Requirements

(A) 4919P-17	1 panel
(B) 4926-17	3/8 yard
(C) 4927-77	1/2 yard
(D) 4923-77	1/2 yard
(E) 4927-55*	3/4 yard
(F) 4921-77	3/4 yard
Backing 4922-17	3 yards (or 1 3/4 yards wide Backing)

*Includes Binding

Additional Supplies Needed

Batting: 52" x 72"
Sewing and Quilting thread
Sewing and Quilting supplies
Quilt size: 44" x 64"
Skill Level: Beginner

Quilt designed by Denise Russell.

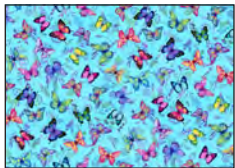
Fabrics in the Collection



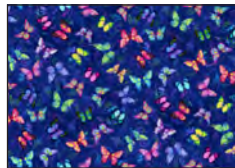
4919P-17 Butterfly Heart Panel
Lt. Blue



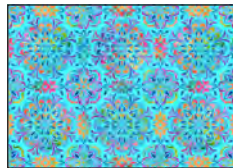
4920-17 Butterfly Blocks
Aquamarine



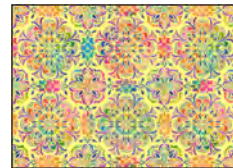
4921-17 Tossed
Butterflies - Lt. Blue



4921-77 Tossed
Butterflies - Navy



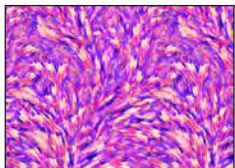
4922-17 Medallion
Lt. Blue



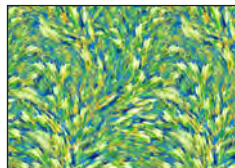
4922-44 Medallion
Yellow



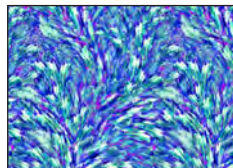
4922-77 Medallion
Navy



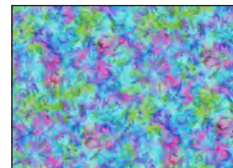
4923-55 Butterfly
Wing Texture-Purple



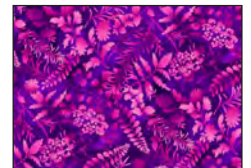
4923-66 Butterfly
Wing Texture-Green



4923-77 Butterfly
Wing Texture-Royal



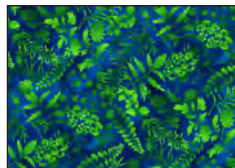
4924-17 Wildflower
Toss - Lt. Blue Multi



4925-55 Silhouettes
Purple



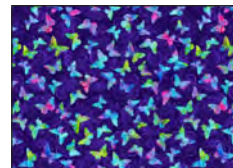
4925-66 Silhouettes
Green



4925-77 Silhouettes
Royal



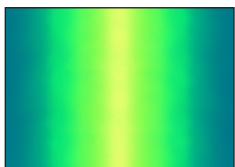
4926-17 Mini
Butterfly - Lt. Blue



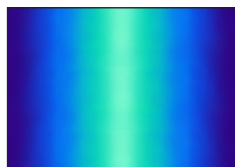
4926-77 Mini
Butterfly - Royal



4927-55 Ombre
Purple Rose



4927-66 Ombre
Green Teal



4927-77 Ombre
Royal Blue

Cutting

Cutting Instructions

*Please note: All strips are cut across the width of the fabric (WOF) from selvage to selvage unless otherwise noted.
(WOF = Width of Fabric, LOF = Length of Fabric)*

Fabric A (4919P-17 Butterfly Heart Panel - Lt. Blue):

*Trim panel to 22-1/2" x 42-1/2".

Fabric B (4926-17 Mini Butterfly - Lt. Blue), cut:

*(4) 2-1/2" x WOF strips for border 2.

Fabric C (4927-77 Ombre - Royal Blue), cut:

*(8) 1-1/2" x WOF strips: (4) for border 1, (4) for border 3.

Fabric D (4923-77 Butterfly Wing Texture - Royal), cut:

*(5) 2-1/2" x WOF strips for border 4.

Fabric E (4927-55 Ombre - Purple Rose), cut:

*(5) 1-1/2" x WOF strips for border 5.

*(6) 2-1/2" x WOF strips for binding.

Fabric F (4921-77 Tossed Butterflies - Navy), cut:

*(5) 4-1/2" x WOF strips for border 6.

Quilt Top Assembly

(Follow the quilt diagram and photograph while assembling the quilt top.)

1. For border 1, sew the four 1-1/2" Fabric C strips together end to end using diagonal seams. Cut two strips 42-1/2" long and sew them to each side of the panel. Press the seams toward the border strips. Measure the width of the quilt top through the center. Cut two border strips that length and sew one to the top and one to the bottom. Press the seams toward the borders.
2. For border 2, sew the four 2-1/2" Fabric B strips together end to end using diagonal seams. Measure the vertical length of the quilt top through the center and cut two border strips that length. Sew one strip to each side of the quilt top. Measure the width of the quilt top through the center. Cut two border strips that length and sew one to the top and one to the bottom. Press the seams toward the borders.
3. Repeat step 2 with the remaining four 1-1/2" Fabric C strips to make and add border 3.
4. Repeat step 2 with the five 2-1/2" Fabric D strips to make and add border 4.
5. Repeat step 2 with the five 1-1/2" Fabric E strips to make and add border 5.
6. Repeat step 2 with the five 4-1/2" Fabric F strips to make and add border 6.

Sewing

Measurements include 1/4" seam allowances. Sew with right sides together unless otherwise stated. If no direction is specified, press seam toward darker fabric.

Layering, Quilting, and Finishing

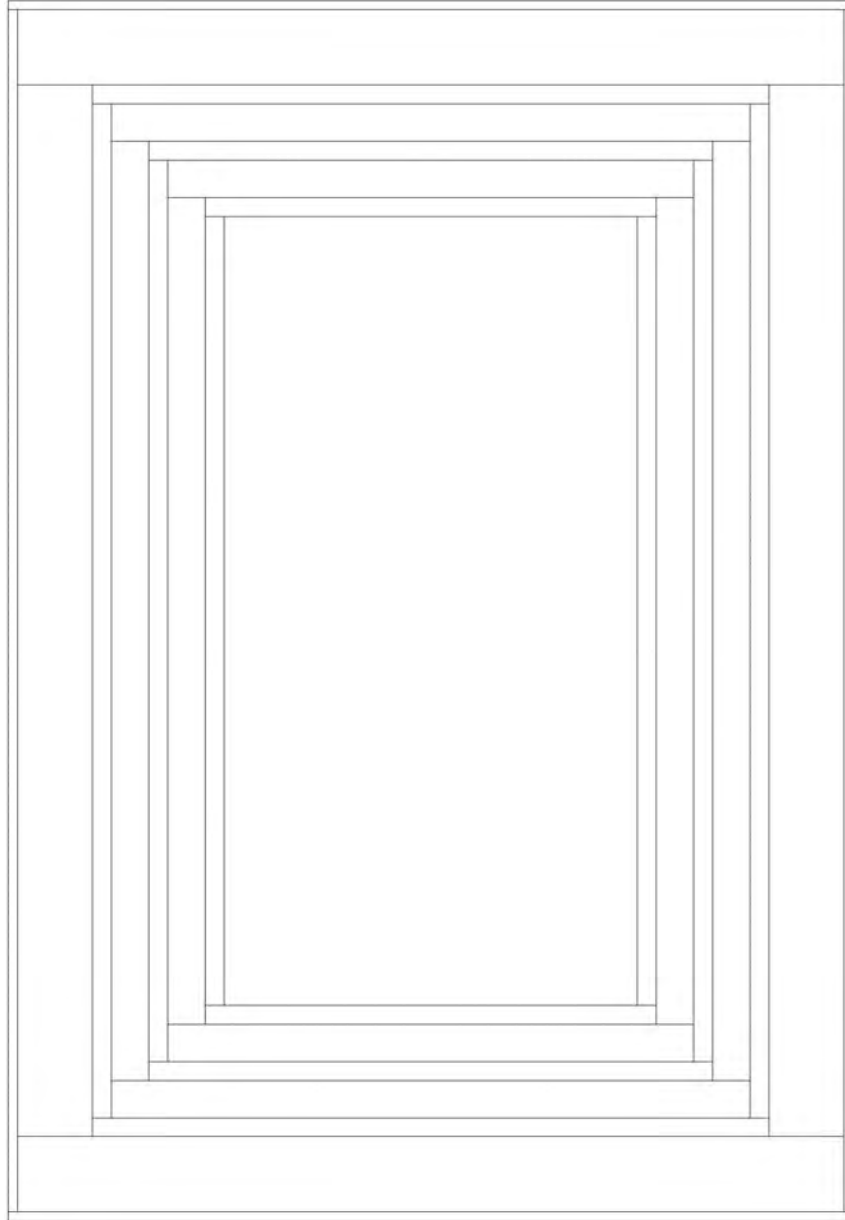
7. Create a quilt sandwich with the batting between the quilt top and the backing. Pin or baste layers together, mark quilting design, and quilt by hand or machine. When quilting is complete, remove pins or basting, and trim batting and backing even with raw edges of the quilt top.

Binding

8. Sew the six 2-1/2" Fabric E binding strips together end to end using a diagonal seam to make one long strip. Fold in half lengthwise and press. Sew binding to the edges of the quilt top, mitering corners, and overlapping ends. Fold binding to the back of the quilt and stitch it in place by hand to finish.

©2019 Studio e Fabrics®

Every effort has been made to ensure that all projects are error free. All the information is presented in good faith; however, no warranty can be given nor results guaranteed as we have no control over the execution of instructions. Therefore, we assume no responsibility for the use of this information or damages that may occur as a result. When errors are brought to our attention, we make every effort to correct and post a revision as soon as possible. Please make sure to check www.studioefabrics.com for pattern updates prior to starting the project. We also recommend that you test the project prior to cutting for kits. Finally, all free projects are intended to remain free to you and are not for resale.



Quilt Diagram