

Full Moon Owl

Quilt Designed by eQuilter



52 1/2" x 64 1/2"

Skill Level: Intermediate

Finished Quilt Size: 52 1/2" x 64 1/2"

Please read all instructions before beginning. Pre-washing recommended for hand dyes only. Pre-washing NOT recommended for panels and prints.

Yardages and Cutting

WOF is 42" width of fabric from selvage edge to selvage edge.

LOF is length of fabric, parallel to the selvage edge.

Remove as little fabric as possible when squaring strip ends.

1 Full Moon Owl panel

- Trim to 27 1/2" x 39 1/2".

1 yard Dark Blue tonal

- 4 strips 2" x WOF; cut into 2 strips 39 1/2" and 2 strips 30 1/2" for panel framing.
- 6 strips 2 1/2" x WOF for outside border.

3/4 yard Charcoal print

- 7 strips 2 1/4" x WOF for binding.

1 1/2 yards Wood print

- 4 strips 3 1/2" x LOF; cut into (2) 3 1/2" x 41" and (2) 3 1/2" x 53" strips for inner border.

3/4 yards Dark Slate print

- 1 strip 7 1/4" x WOF; cut into (5) squares. Cut each square in half diagonally twice, to make 20 triangles.
- 3 strips 3 1/2" x WOF; cut into (4) 3 1/2" squares and (12) 3 1/2" x 6 1/2" strips.

3/4 yard Light Gray tonal

- 2 strips 6 7/8" x WOF; cut into (10) 6 7/8" squares. Cut each square in half diagonally once, to make 20 triangles.
- 2 strips 3 1/2" x WOF; cut into (8) 3 1/2" x 6 1/2" rectangles. From the remainder of these strips, cut (8) 3 1/2" x 3 1/2" squares.

3/4 yard Medium Gray tonal

- 4 strips 3 1/2" x WOF; cut into (40) 3 1/2" squares
- 1 strips 7 1/4" x WOF; cut into (5) squares. Cut each square in half diagonally twice, to make 20 triangles.

4 yards of 42" backing fabric

- 2 strips 68" x WOF

OR

2 yards wide backing fabric

- 1 piece 68" x 80"

Batting

- 1 piece 68" x 80"

Piecing the Border Units

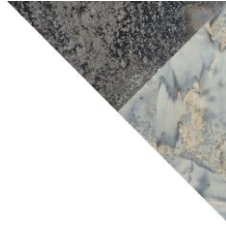
Use a 1/4" seam allowance for all stitching. Press seams as directed.

1. Sew (1) 3 1/2" medium gray square to (1) 3 1/2" Dark Slate print square to form a 3 1/2" x 6 1/2" strip. Sew this strip to (1) 3 1/2" x 6 1/2" Dark Slate print strip. Repeat to make (4) Border Corner Units. Label and set aside.



Border Corner Unit — Make 4

2. **Left Point and Right Point Units:** Using the diagrams below, sew (1) Dark Slate print quarter square triangle to (1) Medium Gray tonal quarter square triangle to make a $6\frac{7}{8}$ " larger Point Triangle. Press the seam toward the print, and trim if necessary. Repeat to make 10 Left and 10 Right Point Triangles.



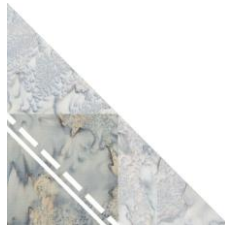
Left Point Triangle - Make 10



Right Point Triangle – Make 10

3. Draw a diagonal line from corner to corner on the wrong side of (20) $3\frac{1}{2}$ " Medium Gray Tonal Squares.

4. Place a marked $3\frac{1}{2}$ " Medium Gray tonal square right sides together on top of the corner of a $6\frac{7}{8}$ " Light Gray tonal triangle, aligning the sides of the square. Sew on the line. Trim the seam allowance $\frac{1}{4}$ " out from the stitching, and press toward the darker side. This triangle should also measure $6\frac{7}{8}$ ". Repeat to make a total of 20 large triangles.



5. Being very careful with the orientation, make 10 Left Point and 10 Right Point Units (below). These units will measure $6\frac{1}{2}$ ". Label each stack, and set aside.



Left Point Unit - Make 10



Right Point Unit – Make 10

6. **Left End and Right End Units:** Draw a diagonal line from corner to corner on the wrong side of (8) $3\frac{1}{2}$ " Light Gray Tonal Squares.

7. Using the diagram below, place a marked $3\frac{1}{2}$ " Light Gray Tonal square right sides together on one end of a $3\frac{1}{2}$ " x $6\frac{1}{2}$ " Dark Slate rectangle. Sew on the line. Trim seam allowance $\frac{1}{4}$ " from the stitched line. Press the seam toward the darker side. Repeat to make 4 of each end.



Left End Upper – Make 4



Right End Upper – Make 4



8. Draw a diagonal line from corner to corner on the wrong side of (16) $3\frac{1}{2}$ " Medium Gray Tonal Squares.

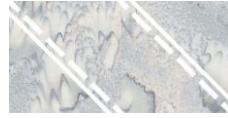
9. Using the diagram below, place a marked 3 1/2" Medium Gray Tonal square right sides together on one end of a 3 1/2" x 6 1/2" Light Gray tonal rectangle. Sew on the line. Trim seam allowance 1/4" from the stitched line. Press the seam toward the darker side. Repeat these steps with a second marked 3 1/2" Medium Gray Tonal square to the opposite end of the 3 1/2" x 6 1/2" rectangle. Make 4 of each end.



Left End Lower – Make 4



Right End Lower – Make 4



10. Sew (1) Left End Lower unit to (1) Left End Upper unit, as show. Repeat to make a total of 4 Left End Units and 4 Right End Units.



Left End Unit - Make 4



Right End Unit – Make 4

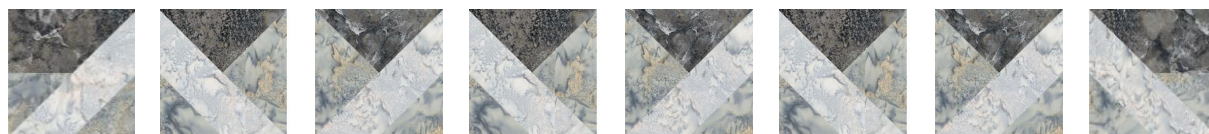
Completing the Quilt

Pay careful attention to the positioning of the units to keep the pieces pointing in the correct direction. Refer to the exploded quilt diagram as needed throughout the following steps.

1. Sew (1) 2" x 39 1/2" Dark Blue tonal strip to each side of the panel. Press seams toward the strip.
2. Sew (1) 2" x 30 1/2" strip to the top and bottom of the panel. Press seams toward the strip.

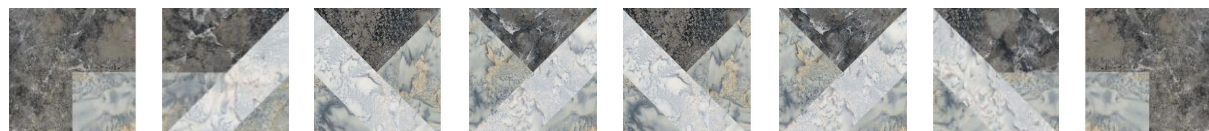
3. Sew the 3 1/2" x 50" (LOF) Wood Print strips to opposite long sides of the quilt center, beginning, ending, and locking stitches 1/4" from the corners of the quilt center. Repeat with the 3 1/2" x 38" strips on the top and bottom edges. Miter corners using your favorite method, checking to be sure that all corners lie flat. Trim mitered corner seams to 1/4" and press open. Press border seams toward the border strips.

4. **SIDE BORDERS:** Using the Exploded Quilt Diagram and the diagram below for reference, sew the side border pieces together as follows (Make 2 of these and label them):



L End L Point R Point L Point R Point L Point R Point R End

5. **TOP AND BOTTOM BORDERS:** Using the Exploded Quilt Diagram and the diagram below for reference, sew the side border pieces together as follows (Make 2 of these and label them):



Corner L End L Point R Point L Point R Point R End Corner

6. Sew side borders onto center panel, pressing seams toward the panel. Sew top and bottom borders onto the panel, once again pressing seams toward the panel. At this point, the top should measure 48 1/2" x 60 1/2".

7. Sew the 2 1/2" x WOF Dark Blue tonal strips short ends together to make a long strip. Press seams to one side. Cut into (2) 60 1/2" strips and (2) 52 1/2" strips. Stitch the longer strips to the long sides of the quilt center and the shorter strips to the top and bottom. Press seams toward the strips.

8. If using 42" backing fabric, remove the selvage edges from the backing pieces. Join the pieces on the long edges with a 1/2" seam allowance. Press seam open. Trim to make a 68" x 80" backing piece.

9. Layer the quilt top with the backing and batting pieces. Quilt as desired. Trim batting and backing even with the top.

10. Join the Charcoal print binding strips on the short ends with diagonal seams to make a long strip. Press seams in one direction. Press the strip in half along the length with wrong sides together. Bind the quilt edges using your favorite method to complete the quilt.



Exploded Quilt Diagram