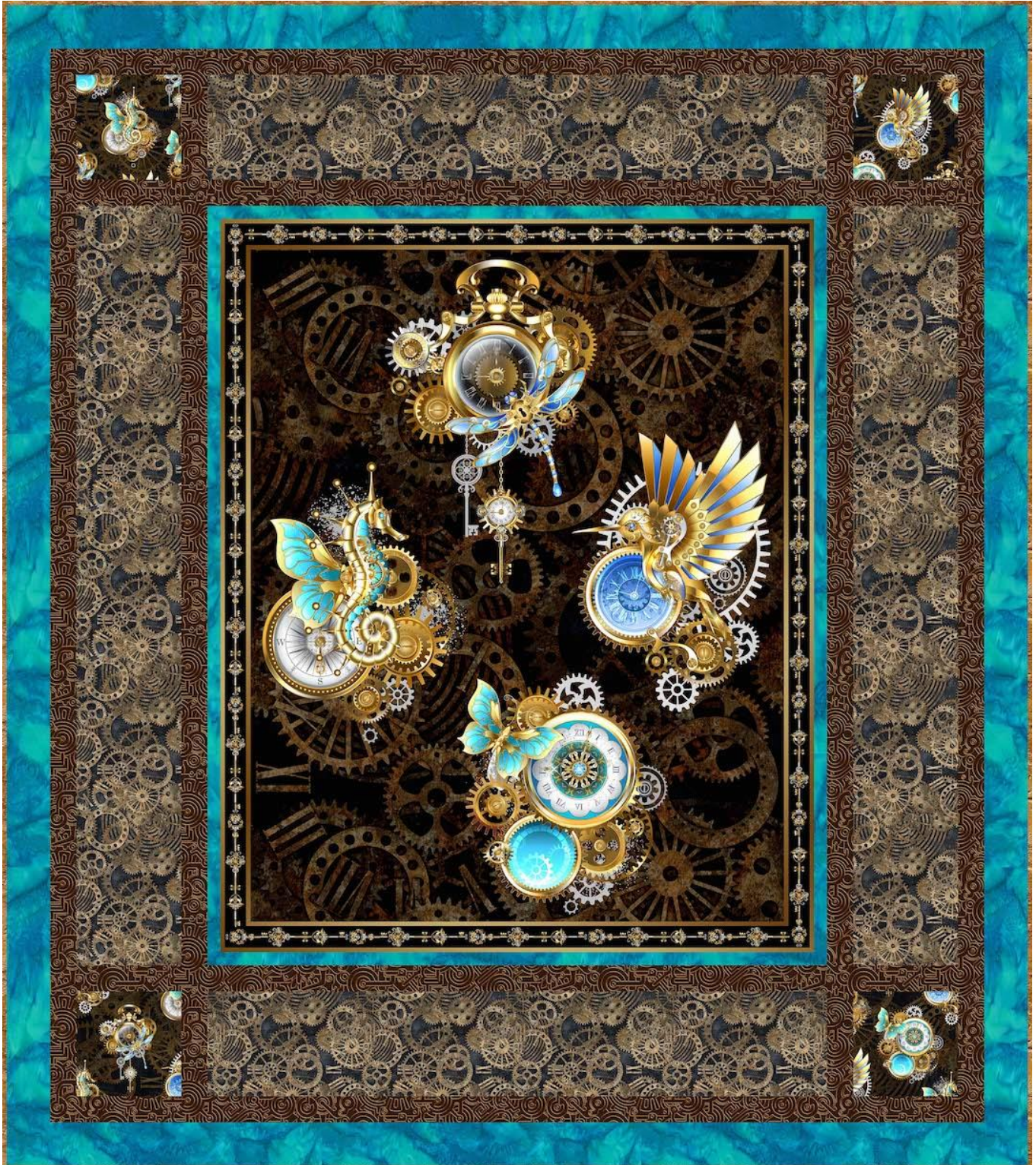


Steampunk Jewels

Quilt Designed by eQuilter



58 1/2" x 66 1/2"

Skill Level: Confident Beginner**Finished Quilt Size:** 58 1/2" x 66 1/2"

*Please read all instructions before beginning. Pre-washing recommended for hand dye only.
Pre-washing NOT recommended for other fabrics.*

Yardages and Cutting

WOF is width of fabric from selvage edge to selvage edge. Remove as little fabric as possible when trimming selvages and squaring strip ends.

Steampunk Jewels panel

- Trim to 34 1/2" x 42 1/2".

1/2 yard steampunk print

- Fussy-cut (4) 6 1/2" squares with a jewel centered in each.

7/8 yard tan gears

- 4 strips 6 1/2" x WOF for border.

1 yard dark brown print

- 1 strip 2" x WOF; cut into (4) 2" x 6 1/2" strips.
- 11 strips 2" x WOF for borders.

5/8 yard caramel texture

- 7 strips 2 1/4" x WOF for binding.

7/8 yard aqua hand dye

- 6 strips 3" x WOF for border.
- 4 strips 1 1/4" x WOF; trim to 2 strips each 42 1/2" and 36" for panel framing.

4 1/4 yards of 44/45" backing fabric OR

4 2/3 yards directional backing fabric

- 2 pieces 74" x WOF OR
- 2 pieces 82" x WOF directional fabric

OR

2 1/4 yards wide backing fabric

- 1 piece 74" x 82"

Batting

- 1 piece 74" x 82"

Completing the Quilt

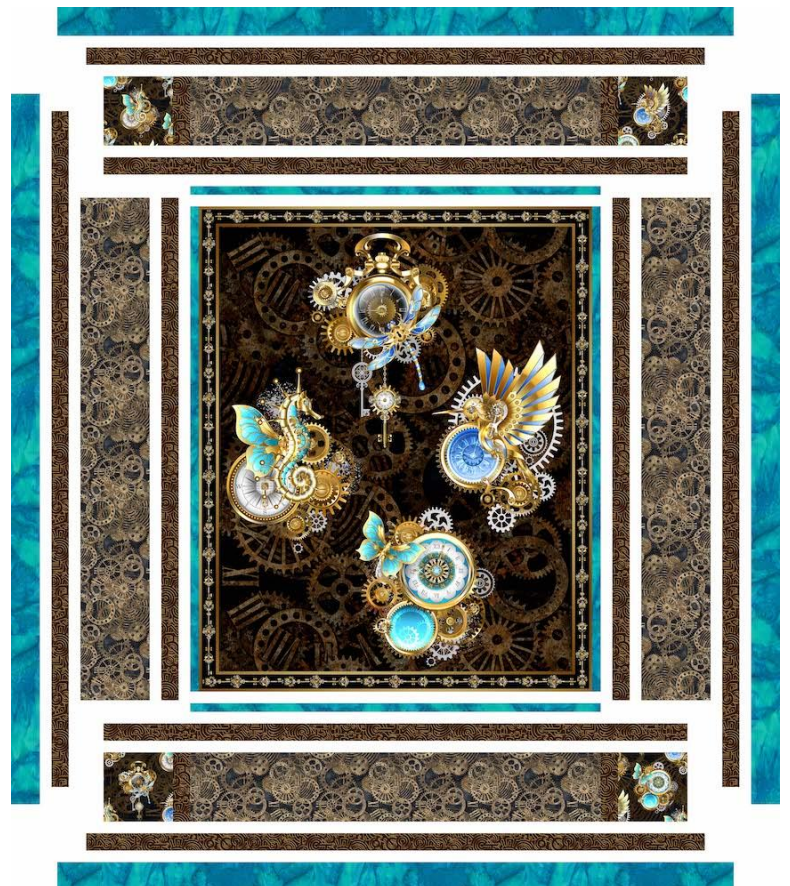
Use a 1/4" seam allowance for all stitching. Press all seams as directed.

1. Stitch the 1 1/4" x 42 1/2" aqua strips to the long sides of the panel. Press seams toward the strips. Sew the 1 1/4" x 36" strips to the top and bottom to complete the 36" x 44" framed panel. Press seams toward the strips.

2. Sew the 6 1/2" x WOF tan gears strips short ends together to make a long strip. Press seams to one side. Cut into 2 strips each 36" and 44".

3. Repeat step 2 with the 2" x WOF dark brown strips, cutting 2 strips each 59", 54", 51" and 44". Repeat with the 3" x WOF aqua strips, cutting 2 strips each 62" and 59".

4. Stitch the 44" tan gears strips lengthwise with the 2" x 44" dark brown strips. Press seams toward the dark brown strips. Sew to the long sides of the framed panel. Press seams toward the pieced strips.



5. Sew the 2" x 51" dark brown strips to the top and bottom of the panel section. Press seams toward the strips.
6. Stitch a 2" x 6 1/2" dark brown strip and then a 6 1/2" steampunk square to each end of the 6 1/2" x 36" tan gears strips to make 6 1/2" x 51" top/bottom strips. Press seams toward the dark brown strips. Sew the strips to the top and bottom of the panel section to complete the 51" x 59" quilt center. Press seams toward the panel section.
7. Sew the 59" dark brown strips to the long sides of the quilt center. Press seams toward the strips. Add the 54" dark brown strips to the top and bottom. Press seams toward the strips.
8. Stitch the 62" aqua strips to the long sides of the quilt center. Press seams toward the strips. Sew the 59" aqua strips to the top and bottom to complete the top. Press seams toward the strips.
9. If using 44/45" backing fabric, remove the selvage edges from the backing pieces. Join the pieces on the long edges with a 1/2" seam allowance. Press seam open. Trim to make the 74" x 82" backing piece.
10. Layer the top with the backing and batting pieces. Quilt as desired. Trim batting and backing even with the top.
11. Join the caramel texture binding strips on the short ends with diagonal seams to make a long strip. Press seams in one direction. Press the strip in half along the length with wrong sides together. Bind the quilt edges using your favorite method to complete the quilt.