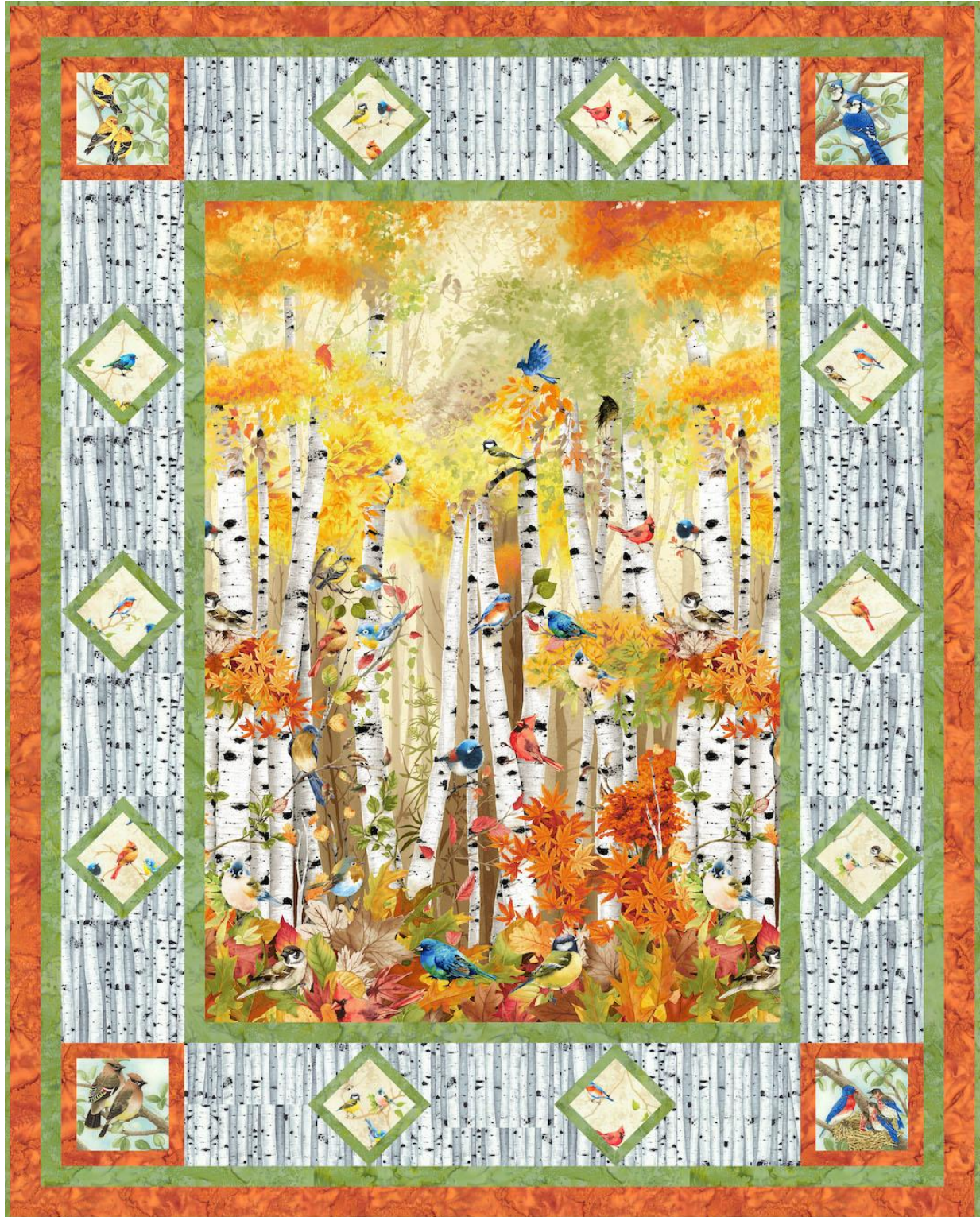


Birch Song

Quilt Designed by eQuilter



47" x 59"

Skill Level: Confident Beginner
Finished Block Size: 6" x 6"

Finished Quilt Size: 47" x 59"
Number of Blocks: 14

Please read all instructions before beginning. Pre-washing recommended for hand dyes only. Pre-washing NOT recommended for other fabrics.

Yardages and Cutting

WOF is 42" width of fabric from selvage edge to selvage edge. Remove as little fabric as possible when squaring strip ends.

2 continuous panels Birch Song scenic

- 1 rectangle 28 1/2" x 40 1/2".

1 Songbird Tree panel

- Fussy-cut (4) 5" x 5" squares with a bird motif centered in each square.

1/2 yard cream bird print

Apply a heavy coat of spray starch or spray stabilizer to the wrong side of the fabric and press dry before cutting. Prepare a 3 3/4"-square clear template.

- Fussy-cut (10) 3 3/4" squares with a bird or birds centered in each, placing the template on-point on the fabric as shown.



1 yard birch print

- 3 strips 6 1/2" x WOF; cut into (14) 6 1/2" squares.
- 2 strips 3 7/8" x WOF; cut into (20) 3 7/8" squares.

1 1/4 yards green hand dye

- 4 strips 1 1/2" x WOF; trim to 2 each 40 1/2" and 30 1/2" lengths for panel framing.
- 1 strip 4 3/4" x WOF; cut into (20) 1" x 4 3/4" strips.
 - Trim remainder of strip to 3 3/4" wide; cut into (20) 1" x 3 3/4" strips.
- 5 strips 1 1/2" x WOF for border.
- 6 strips 2 1/4" x WOF for binding.

2/3 yard orange hand dye

- 3 strips 1 1/4" x WOF; cut into 8 each 1 1/4" x 6 1/2" strips and 1 1/4" x 5" strips.
- 6 strips 2" x WOF for border.

3 2/3 yards of 42" backing fabric OR

4 1/3 yards of directional backing fabric

- 2 strips 63" x WOF OR
- 2 strips 75" x WOF for directional backing

OR

1 3/4 yards wide backing fabric

- 1 piece 63" x 75"

Batting

- 1 piece 63" x 75"

Piecing the Blocks

Use a 1/4" seam allowance for all stitching. Press seams as directed.

1. Sew a 1 1/4" x 5" orange strip to opposite sides of each 5" bird panel square. Press seams toward the strips. Add a 1 1/4" x 6 1/2" strip to the top and bottom to complete (4) 6 1/2" x 6 1/2" Corner blocks. Press seams toward the strips.



Corner Block — Make 4

2. Layer 4 birch 3 7/8" squares right side up on your cutting mat. Referring to the diagrams on the next page, cut from the top right corner to the lower left corner to make 8 A triangles. Repeat with 6 more squares to make 20 A

triangles. Repeat with the remaining squares except cut from the top left corner to the lower right corner to make 20 B triangles.



A Triangles — Cut 20



B Triangles — Cut 20

3. Stitch a 1" x 3 3/4" green strip to opposite sides of each 3 3/4" cream bird square. Press seams toward the strips. Add the 1" x 4 3/4" strips to the remaining sides to complete (10) 4 3/4" x 4 3/4" center units. Press seams toward the strips.



Center Unit — Make 10

4. Sew a birch A triangle to the top left and bottom right edges of each center unit. Press seams toward the triangles. Stitch the birch B triangles to the remaining sides to complete (10) 6 1/2" x 6 1/2" On-Point blocks. Press seams toward the triangles.



On-Point Block — Make 10

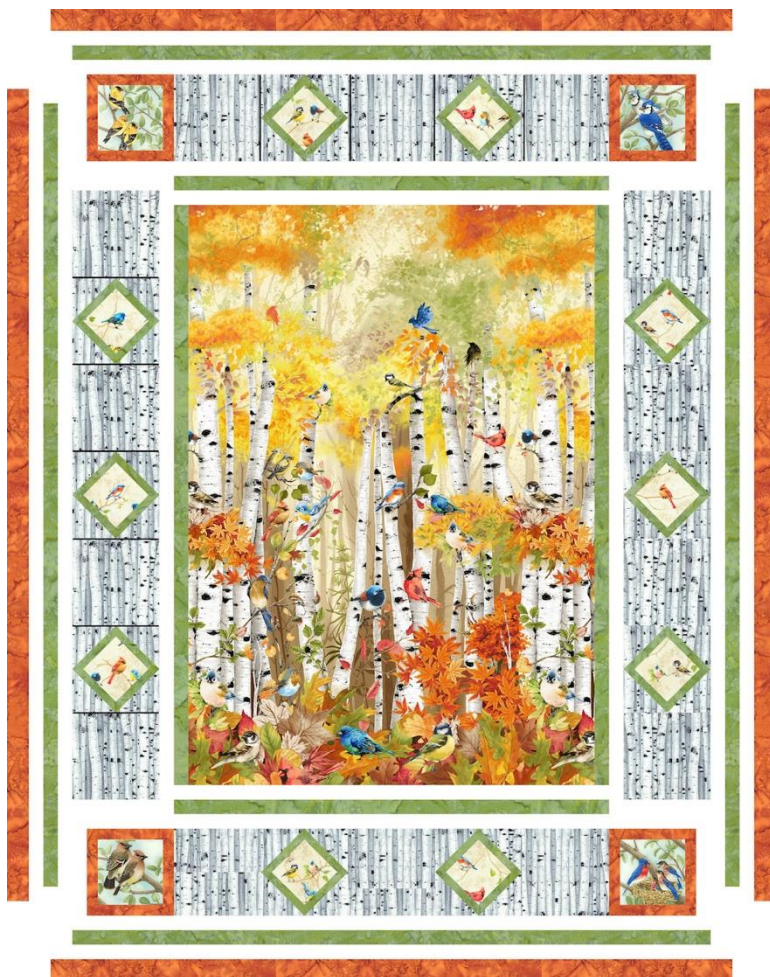
Completing the Quilt

1. Stitch the 1 1/2" x 40 1/2" green strips to the long sides of the scenic rectangle. Press seams toward the strips. Sew the 1 1/2" x 30 1/2" strips to the top and bottom to complete the 30 1/2" x 42 1/2" framed panel. Press seams toward the strips.

2. Sew (4) 6 1/2" birch squares alternately together with 3 On-Point blocks to make the 6 1/2" x 42 1/2" left strip. Press seams toward the squares. Repeat to make the right strip. Stitch the strips to the long sides of the framed panel. Press seams toward the strips.

3. Stitch 3 birch squares alternately together with 2 On-Point blocks; add a Corner block to each end to make the 6 1/2" x 42 1/2" top strip. Press seams toward the birch squares. Repeat to make the bottom strip. Sew the strips to the top and bottom of the panel section to complete the 42 1/2" x 54 1/2" quilt center. Press seams toward the strips.

4. Sew the 1 1/2" x WOF green hand-dye strips short ends together to make a long strip.



Press seams to one side. Cut into 2 each 54 1/2" and 44 1/2" strips. Stitch the longer strips to the long sides of the quilt center and the shorter strips to the top and bottom. Press seams toward the strips.

5. Repeat step 4 with the 2" x WOF orange strips to complete the top, cutting 2 each 56 1/2" and 47 1/2" strips.
6. If using 42" backing fabric, remove the selvage edges from the backing pieces. Join the pieces on the long edges with a 1/2" seam allowance. Press seams open. Trim to make the 63" x 75" backing piece.
7. Layer the quilt top with the backing and batting pieces. Quilt as desired. Trim batting and backing even with the top.
8. Join the green hand-dye binding strips on the short ends with diagonal seams to make a long strip. Press seams in one direction. Press the strip in half along the length with wrong sides together. Bind the quilt edges using your favorite method to complete the quilt.