



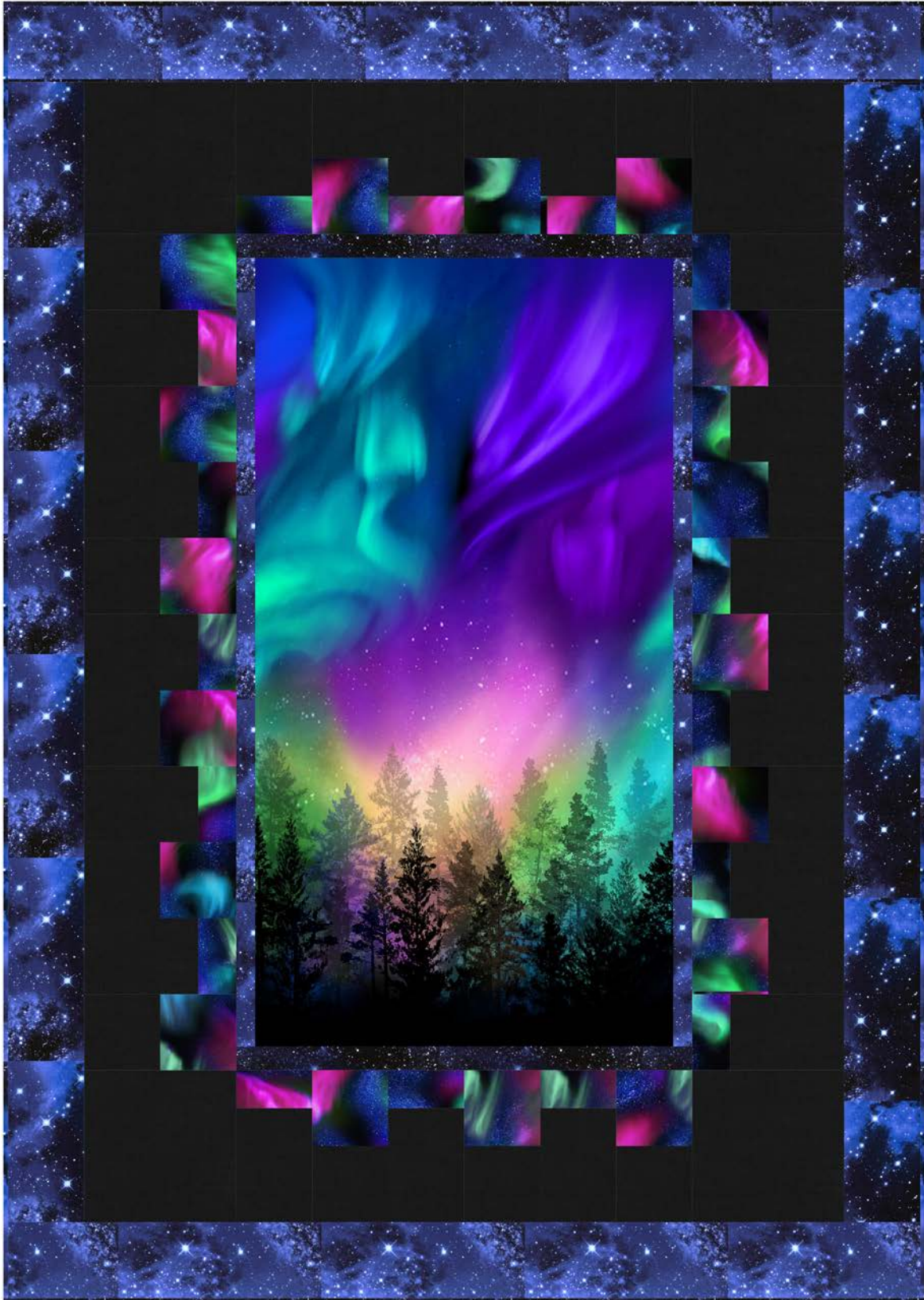
BROOME STREET PATTERNS



Aurora

Northern Lights

Designed by Denniele Bohannon



Finished quilt size: 48½" x 68½"

Fabric Requirements

1 panel ($\frac{2}{3}$ yard) Panel-C8456 Multi
1 $\frac{1}{2}$ yards Space-C9924 Galaxy
(includes $\frac{1}{2}$ yard for binding)
 $\frac{1}{2}$ yard Nature-C6792 Night
1 yard Mix-C7200 Black
 $\frac{3}{4}$ yards backing fabric of your choice
57" \times 77" batting

Cutting

From Panel-C8456 Multi:

- Center the motif and trim the panel to 22 $\frac{1}{2}$ " \times 42".

From Space-C9924 Galaxy:

- Cut six 4 $\frac{1}{2}$ " \times width-of-fabric (WOF) strips. Sew the strips together end to end. Sub-cut two 4 $\frac{1}{2}$ " \times 60 $\frac{1}{2}$ " side outer border strips and two 4 $\frac{1}{2}$ " \times 48 $\frac{1}{2}$ " top/bottom outer border strips.
- Cut two 1 $\frac{3}{4}$ " \times WOF strips. Sub-cut two 1 $\frac{3}{4}$ " \times 24 $\frac{1}{2}$ " top/bottom inner border strips.
- Cut three 1 $\frac{1}{2}$ " \times WOF strips. Sew the strips together end to end. Sub-cut two 1 $\frac{1}{2}$ " \times 42" side inner border strips.
- Cut six 2 $\frac{1}{2}$ " \times WOF binding strips.

From Nature-C6792 Night:

- Cut three 4 $\frac{1}{2}$ " \times WOF strips. Sub-cut seventeen 2 $\frac{1}{2}$ " \times 4 $\frac{1}{2}$ " rectangles (A) and seventeen 4 $\frac{1}{2}$ " squares (B).

From Mix-C7200 Black:

- Cut one 8 $\frac{1}{2}$ " \times WOF strip. Sub-cut four 8 $\frac{1}{2}$ " squares (C).
- Cut two 6 $\frac{1}{2}$ " \times WOF strips. Sub-cut seventeen 4 $\frac{1}{2}$ " \times 6 $\frac{1}{2}$ " rectangles (D).
- Cut two 4 $\frac{1}{2}$ " \times WOF strips. Sub-cut seventeen 4 $\frac{1}{2}$ " squares (E).

Quilt Top Assembly

All seam allowances are $\frac{1}{4}$ " and pieces are sewn right sides together.

1. Sew one side inner border strip to each side of the panel.

Fig. 1



A/D Unit
Make 17.

2. Sew one top/bottom inner border strip to the top and the other to the bottom of the panel.

3. Stitch an A rectangle to a D rectangle (figure 1). Make seventeen A/D units.

Fig. 2

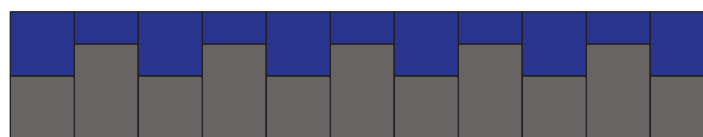


B/E Unit
Make 17.

4. Stitch a B square to an E square (figure 2). Make seventeen B/E units.

5. Following Figure 3, alternately lay out six B/E units and five A/D units; stitch together to make the left side border.

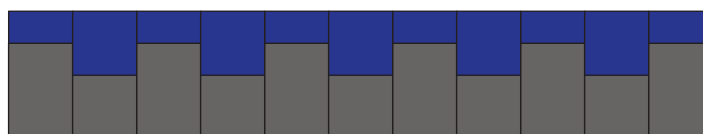
Fig. 3



Left Side Border
Make 1.

6. Following Figure 4, alternately lay out six A/D units and five B/E units; stitch together to make the right side border.

Fig. 4

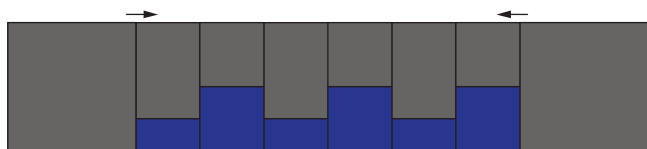


Right Side Border
Make 1.



- Following Figure 5, alternately lay out three **A/D** units, three **B/E** units and two **C** squares; stitch together to make the top border. Press the **C** square seam toward the center.

Fig. 5

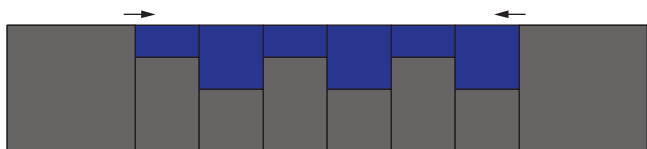


Top Border

Make 1.

- Repeat step 7 following Figure 6 to make the bottom border.

Fig. 6

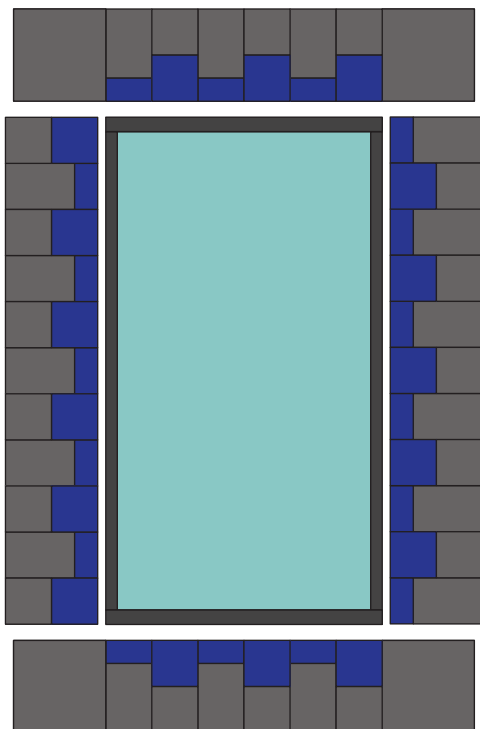


Bottom Border

Make 1.

- Following Figure 7 for orientation, attach the borders to their respective locations, beginning with the sides and followed by the top/bottom. Press the seams toward the border after each addition.

Fig. 7



- Sew one side outer border strip to each side of the quilt center.
- Sew one top/bottom outer border strip to the top and the other to the bottom to complete the quilt top.

Finishing

- Layer the quilt top, batting, and backing, and quilt as desired.
- Stitch the binding strips together end to end using diagonal seams. Fold and press the strip in half lengthwise with wrong sides together.
- Stitch the binding to the quilt front, matching raw edges and mitering the corners.
- Fold the binding to the quilt underside and hand-stitch the folded edge to the quilt back.

Denniele Bohannon
louannamaryquiltdesign.bigcartel.com

©2020 Timeless Treasures www.ttfabrics.com
 This pattern is for individual home use only. This pattern may not be reproduced for commercial purposes (i.e., may not be sold).