

Painted Peacock

Quilt Designed by eQuilter



59" x 64"

Please read all instructions before beginning. Pre-washing NOT recommended.

Yardages and Cutting

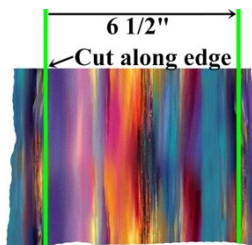
WOF is width of fabric from selvage edge to selvage edge. LOF is length of fabric, parallel to the selvage edges. Remove as little fabric as possible when removing selvages and squaring strip ends.

2 Painted Peacock panels

- Trim both panels to 42 1/2" tall.
- Trim 1 panel to 22 1/2" wide.
- From the second panel, cut (2) 7" x 42 1/2" strips, 1 from each long edge. Label the right strip A and the left strip B.

2 yards wavy stripe

- Cut 4 strips 6 1/2" x LOF, cutting first along the edge of the purple stripe and then cutting 6 1/2" over from there as shown.
- Trim to 2 strips each 64" and 59".



1 1/4 yards black solid

- 6 strips 3" x WOF for outer border.
- 4 strips 3" x WOF; trim to 42 1/2" for panel framing.
- 2 strips 1 1/2" x WOF; trim to 42 1/2" for center sashing.

5/8 yard purple vines

- 7 strips 2 1/4" x WOF for binding

4 1/3 yards 44/45" backing fabric OR

4 5/8 yards directional backing fabric

- 2 strips 75" x WOF OR
- 2 strips 80" x WOF directional backing

OR

2 1/4 yards wide backing fabric

- 1 piece 75" x 80"

Batting

- 1 piece 75" x 80"

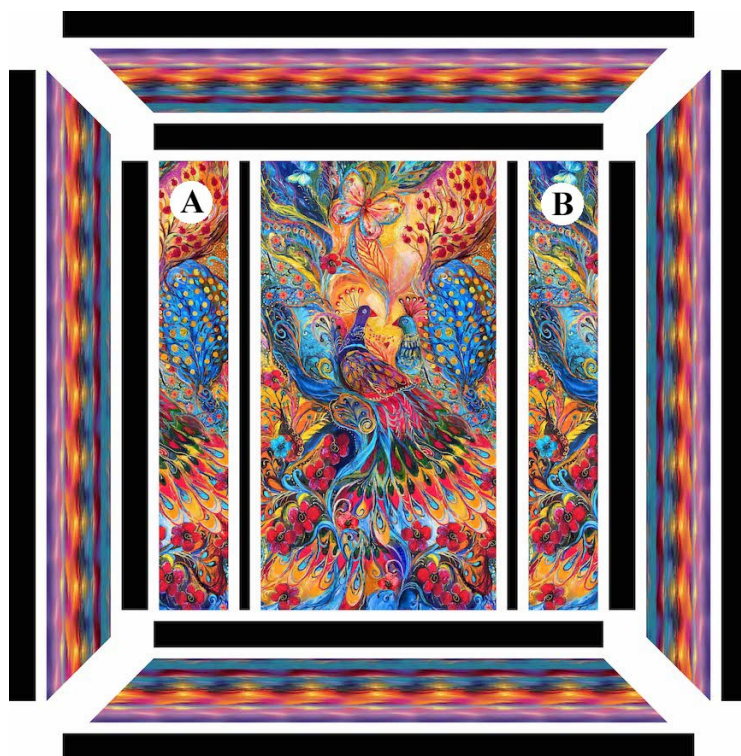
Completing the Quilt

Use a 1/4" seam allowance for all stitching. Press seams as directed. Refer to the exploded quilt diagram as needed.

1. Sew the 1 1/2" x 42 1/2" black strips to the long sides of the large panel. Press seams toward the strips. Add the A panel strip to the left edge and the B panel strip to the right edge to complete the 37 1/2" x 42 1/2" pieced panel. Press seams toward the black strips.

2. Stitch 3" x 42 1/2" black strips to the sides of the pieced panel. Press seams toward the strips. Add 3" x 42 1/2" strips to the top and bottom to complete the 42 1/2" x 47 1/2" panel center. Press seams toward the strips.

3. Center and sew 64" wavy stripe strips to the sides of the panel center, beginning, ending and locking stitches 1/4" from the corners of the panel center. Repeat with 59" strips on the top and bottom. Miter corners using your favorite method, checking to be sure that all corners lie flat and stripe sections match. Trim mitered corner seams to 1/4" and press open. Press border seams toward the border strips.



4. Sew the 3" x WOF black strips short ends together to make a long strip. Press seams to one side. Cut into (4) 59 1/2" strips. Stitch strips to the sides of the bordered center and then to the top and bottom to complete the top. Press seams toward the strips.
5. If using 44/45" backing fabric, remove the selvage edges from the backing pieces. Join the pieces on the long edges with a 1/2" seam allowance. Press seam open. Trim to make the 75" x 80" backing piece.
6. Layer the quilt top with the backing and batting pieces. Quilt as desired. Trim batting and backing even with the top.
7. Join the purple vine binding strips on the short ends with diagonal seams to make a long strip. Press seams open. Press the strip in half along the length with wrong sides together.
8. Bind the quilt edges using your favorite method to complete the quilt.