



quilting
treasures

IMAGINE & CREATE

Mustang Sunset

SIZE 64½" X 76½"



Designed by Cyndi Hershey for Quilting Treasures





26479-E



26480-E



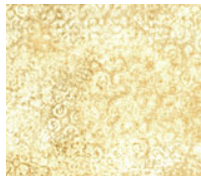
26481-E



26183-B



24696-A



24362-E



26183 O

Designer Notes

- All seams are 1/4" throughout.

Cutting Directions

Note: WOF—a widthwise cut from selvage to selvage;
LOF—a lengthwise cut that is parallel to the selvage.

26479 E: Fabric A (large block print) Block B

- Fussy cut (8) 9 1/2" x 9 1/2" squares, centering template square over each large horse block motif.

26480 E: Fabric B (block print) Block A

- Fussy cut (12) 9 1/2" x 9 1/2" squares: 4 squares centering template on the large blocks, and 8 squares centering template square over a group of four small block motifs.
Tip: Use the "cross" between the four small blocks as a guide to determine the center of each 9 1/2" x 9 1/2" square.

Backing: Fabric C

- Cut (2) 85" x **WOF** strips.

24481 E: Fabric D (horse stripe)

- Fussy cut (4) 7" x **LOF** strips, centering the cut over the realistic horse stripe and star stripe section. Trim two strips to measure 7" x 85" for each long (side) border. Trim two strips to measure 7" x 75" (for top and bottom borders).

FABRIC REQUIREMENTS

Design	Yardage
26479-E (one 24" repeat)	1 panel
26480-E (two 24" repeats)	2 panels
26481-E	2 3/8
26183-B	2/3
24696 A*	1
24362 E	1 5/8
26183-O	1/8
Backing 4 3/4 or 2 1/4 yds Wide Backing	
Quilt batting, 73" x 85"	
Clear template plastic, 9 1/2" x 9 1/2"	
Basic rotary cutting, sewing, and pressing supplies	
*includes binding	



26183 B: Fabric E (blue tonal) Block Sashing

- Cut (13) 1½" x **WOF** strips.

24696 A: Fabric F (brown geometric print) Nine-Patch Blocks

Nine-Patch Blocks

- Cut (6) 1½" x **WOF** strips.

Binding

- Cut (8) 2½" x **WOF** strips.

24362 E: Fabric G (cream tonal) Nine-Patch Blocks

- Cut (7) 1½" x **WOF** strips. *Block Sashing*
- Cut (26) 1½" x **WOF** strips.

26183 O: Fabric H (burnt orange tonal) Nine-Patch Blocks

- Cut (2) 1½" x **WOF** strips.

Quilt Instructions

Nine-Patch Blocks

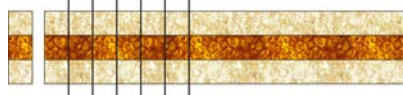
1. Referring to Diagram 1, sew one 1½" x **WOF** Fabric G (cream tonal) strip between two 1½" x **WOF** Fabric F (brown geometric print) strips for one G/F Strip Set. Press seams in the same direction. Make a total of three G/F Strip Sets. Crosscut a total of (60) 1½" x 3½" G/F Units.

Diagram 1



2. Referring to Diagram 2, sew one 1½" x **WOF** Fabric H (burnt orange tonal) strip between two 1½" x **WOF** Fabric G (cream tonal) strips for one H/G Strip Set. Press seams in the same direction. Make a total of two H/G Strip Sets. Crosscut a total of (30) 1½" x 3½" H/G Units.

Diagram 2



3. Referring to Diagram 3 and noting orientation of the unit seams, sew one H/G Unit between two G/F Units for one Nine-Patch Block. Nine-Patch Block should measure 3½" square. Make a total of (30) Nine-Patch Blocks.

Diagram 3



Block Sashing

1. Referring to Diagram 4, sew one 1½" x **WOF** Fabric E (blue tonal print) strip between two 1½" x **WOF** Fabric G (cream tonal) strips for one Block Sashing Strip Set. Press seams in the same direction. Make a total of (13) strip sets. Crosscut a total of (49) 9½" x 3½" Block Sashing Units.

Diagram 4



Quilt Assembly

Note: Refer to the Quilt Layout Diagram for the following steps.

1. *Nine-Patch Rows.* Sew five Nine-Patch Blocks and four Block Sashing Units together in the following order: Nine-Patch, Sashing Unit, Nine-Patch, Sashing Unit, Nine-Patch, Sashing Unit, Nine-Patch, Sashing Unit, Nine-Patch for one Nine-Patch Row. Row should measure 3½" x 51½". Make a total of six Nine-Patch Rows.
2. *Block Rows 1 & 5.* Noting position of the blocks, sew three Block A, one Block B and five Block Sashing Units together. Row should measure 9½" x 51½".
3. *Block Rows 2, 3 & 4.* Noting position of the blocks, sew two Block B, two Block A and five Block Sashing Units together. Row should measure 9½" x 51½".



4. *Assemble Quilt Center.* Noting position of the rows, sew the eleven rows together, beginning and ending with a Nine-Patch Row.

Quilt Center should measure 51½" x 63½".

5. *Mitered Outer Border.* Referring to the quilt image on page 1, orient the borders so the star stripe is adjacent to the binding. Beginning and ending ¼" from the Quilt Center (back stitch to secure seam), center and sew one 7" x 85" Fabric D (horse stripe) rectangle to each long side of the Quilt Center. Beginning and ending ¼" from the Quilt Center (back stitch to secure seam), center and sew one 7" x 75" Fabric D (horse stripe) rectangle to each short side of the Quilt Center.

Miter border corners. Trim each mitered corner seam to ½" and press seam open. Quilt Top should measure 64½" x 76½".

Finishing

1. If not already prepared, sew the two backing strips together along the 85" length for the backing. Trim backing to measure approximately 73" x 85".
2. Place the quilt top right side up on the top of the batting and the wrong side of the backing fabric.
3. Baste the layers together and quilt as desired. Trim the backing and batting even with the quilt top.
4. Sew the eight 2½" x **WOF** Fabric F (brown geometric print) strips together (end to end) using 45° seams to make a continuous strip. Fold strip in half lengthwise (with wrong sides together) and press. Bind as desired.

Quilt Layout Diagram



While all possible care has been taken to ensure the accuracy of this pattern, we are not responsible for printing errors or the way in which individual work varies.