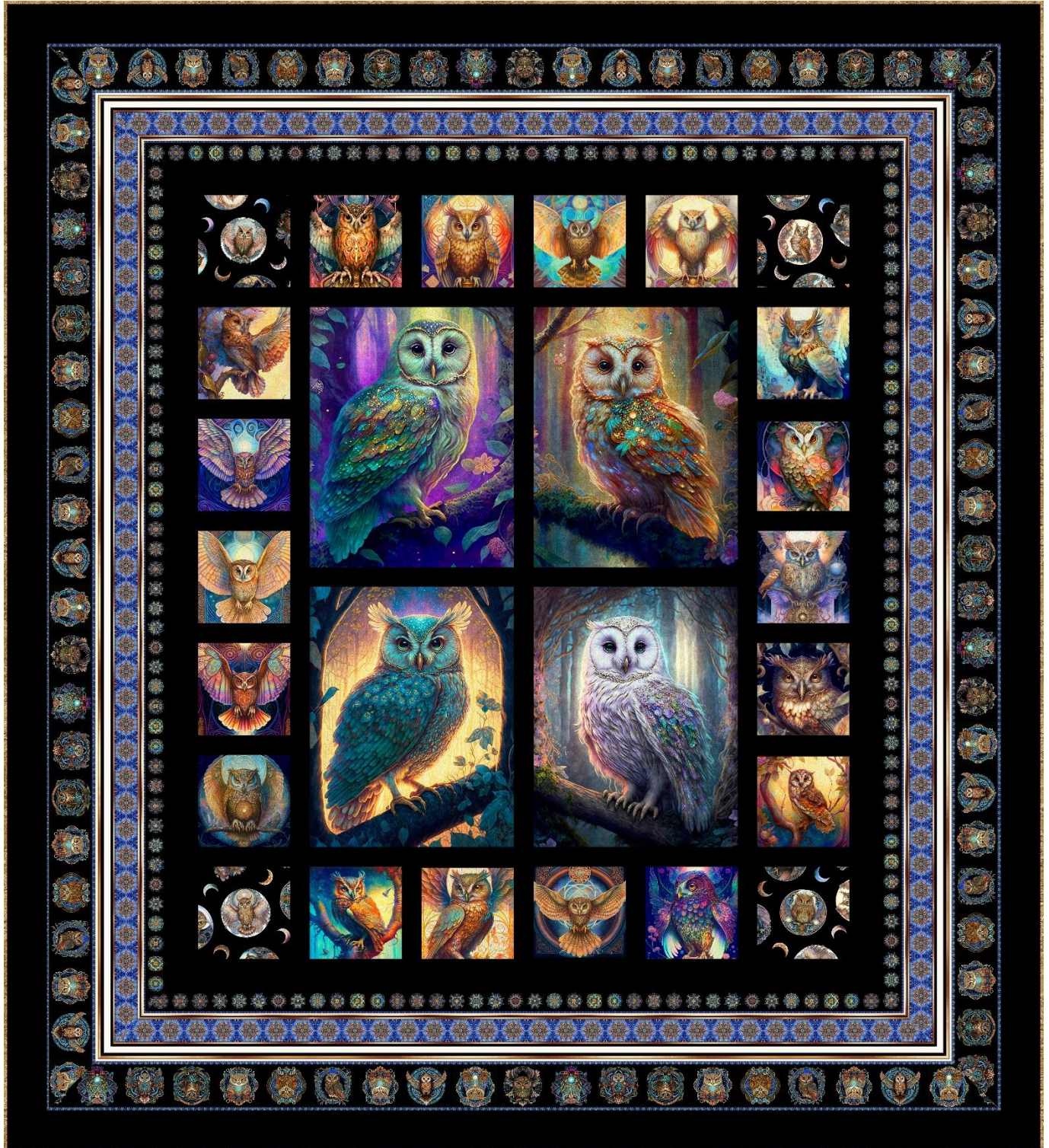


Mystic Owls

Quilt Designed by eQuilter



78 1/2" x 87"

Skill Level: Confident Beginner**Finished Quilt Size:** 78 1/2" x 87"*Please read all instructions before beginning. Pre-washing NOT recommended.*

Yardages and Cutting

WOF is width of fabric from selvage edge to selvage edge. LOF is length of fabric, parallel to the selvage edges. Remove as little fabric as possible when removing selvages and squaring strip ends.

1 Large Mystic Owls panel

- Cut (4) 16" x 20 1/4" frames, keeping the frames centered.

1 Small Mystic Owls panel

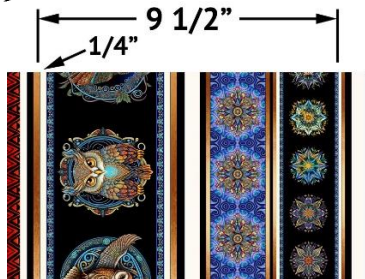
- Cut (18) 7 1/2" square frames, keeping the frames centered.

1/2 yard allover owls

- Fussy cut (4) 7 1/2" square frames, centering on an owl circle.

2 1/2 yards owl stripe

- Cut (2) 9 1/2" x LOF strips, beginning 1/4" above the top of the owl stripe and cutting over 9 1/2" as shown. Trim (2) strips to 86" and (2) strips to 78".



2 1/4 yards black solid

- 1 strip 2" x WOF; trim to (2) strips 20 1/4".
- 1 strip 2" x WOF; trim to (1) strip 33".
- 2 strips 2" x WOF; trim to (2) strips 36".
- 2 strips 2" x WOF; trim to (2) strips 41 1/2".
- 5 strips 2" x WOF; trim to (22) strips 2" x 7 1/2" for small frame sashing.
- 6 strips 3" x WOF for border.
- 8 strip 3 1/2" x WOF for outer border.

5/8 yard tan tonal

- 9 strips 2 1/4" x WOF for binding

8 yards 44/45" backing fabric

- 3 strips 93" x WOF OR

OR

2 3/4 yards wide backing fabric

- 1 piece 93" x 102"

Batting

- 1 piece 93" x 102"

Completing the Quilt

Use a 1/4" seam allowance for all stitching. Press seams as directed. Refer to the exploded quilt diagram as needed.

1. Join a 2" x 20 1/4" black strip between (2) large owl frames side by side to make an owl pair unit. Repeat to make a second owl pair unit. Press seams toward the frames.
2. Sew the 2" x 33" black strip between the owl pair units, top to bottom to form the 33" x 41 1/2" owl center. Press seams toward the frames.
3. Stitch the 2" x 41 1/2" black strips to the sides of the center and the 2" x 36" black strips to the top and bottom of the center. Press seams toward the strips.
4. Join (5) 2" x 7 1/2" black strips between (4) 7 1/2" square small mystic owl frames and (2) 7 1/2" square allover owl frames, side to side, with the allover owl frames at the ends, to make the 7 1/2" x 50" top small owl border, as shown in the exploded diagram. Repeat to make the bottom small owl border. Press seams toward the strips.

5. Join (6) 2" x 7 1/2" black strips between (5) 7 1/2" square small mystic owl frames, top to bottom, with black strips at the top and bottom, to make a 7 1/2" x 44 1/2" side small owl border, as shown in the exploded diagram. Repeat to make a second side small owl border. Press seams toward the strips.
6. Stitch the side small owl borders to the sides of the center and the top and bottom small owl borders to the top and bottom of the center. Press seams toward the strips.
7. Join the (6) 3" x WOF black solid strips short ends together to make a long strip. Press seams to one side. Cut into 2 strips each 58 1/2" and 55". Stitch the longer strips to the sides of the center and the shorter strips to the top and bottom. Press seams toward the strips.
8. Center and sew 9 1/2" x 86" owl stripe strips to the sides of the quilt center, beginning, ending and locking stitches 1/4" from the corners of the quilt center. Repeat with the 9 1/2" x 78" owl stripe strips on the top and bottom edges. Miter corners using your favorite method, checking to be sure that all corners lie flat and the stripe sections match. Trim mitered corner seams to 1/4" and press open. Press border seams toward the border strips.
9. Join the (8) 3 1/2" x WOF black solid strips short ends together to make a long strip. Press seams to one side. Cut into 2 strips each 81 1/2" and 79". Stitch the longer strips to the sides of the center and the shorter strips to the top and bottom to complete the quilt top. Press seams toward the strips.
10. If using 44/45" backing fabric, remove the selvage edges from the backing pieces. Join the pieces on the long edges with a 1/2" seam allowance. Press seam open. Trim to make the 93" x 102" backing piece.
11. Layer the quilt top with the backing and batting pieces. Quilt as desired. Trim batting and backing even with the top.
12. Join the tan tonal binding strips on the short ends with diagonal seams to make a long strip. Press seams open. Press the strip in half along the length with wrong sides together.
13. Bind the quilt edges using your favorite method to complete the quilt.

