

Opulent Owls

Quilt Designed by eQuilter



56" x 63"

Skill Level: Intermediate**Finished Quilt Size:** 56" x 63"

*Please read all instructions before beginning. Pre-washing recommended for hand dye only.
Pre-washing not recommended for other fabrics.*

Yardages and Cutting

*WOF is width of fabric from selvage edge to selvage edge. LOF is length of fabric, parallel to the selvage edges.
Remove as little fabric as possible when trimming selvages and squaring strip ends.*

Opulent Owls panel

- Trim to 31 1/2" x 38 1/2".

1 1/2 yards blue owls

- Fussy-cut (14) 7 1/2" squares, centering an owl in each.

3/4 yard rust diamonds

- 3 strips 8" x WOF; cut into (12) 7 1/2" squares.

1 3/8 yards navy diamonds

- 2 strips 4" x WOF for top/bottom borders.
- 2 strips 2 1/2" x WOF; trim to (2) 35 1/2" strips for panel framing.
- 4 strips 4" x remaining **LOF** for side borders.
- 3 strips 2 1/2" x remaining **LOF** for panel framing.
- 2 strips 4" x remaining **WOF** for top/bottom borders.

5/8 yard aqua spots

- 7 strips 2 1/4" x WOF for binding.

1 1/4 yards tan hand dye

- 10 strips 4" x WOF; cut into (96) 4" squares.

4 1/8 yards of 44/45" backing fabric OR

4 1/2 yards of directional fabric

- 2 pieces 72" x WOF OR
- 2 pieces 79" x WOF for directional backing

OR

2 yards wide backing fabric

- 1 piece 72" x 79"

Batting

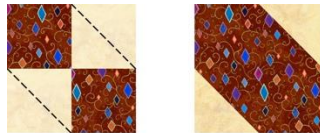
- 1 piece 72" x 79"

Piecing the Units

Use a 1/4" seam allowance for all stitching. Press all seams as directed.

1. Draw a diagonal line from corner to corner on the wrong side of the 4" tan squares.

2. Place a marked square right sides together on the top right and bottom left corners of a rust square with the diamonds on the square upright. Sew on the lines. Trim seam allowance 1/4" out from the stitching. Press the triangles over with seam allowance toward the triangles to complete (1) 7 1/2" x 7 1/2" corner unit. Repeat to make a second corner unit. Repeat to make 2 reverse (R) corner units **except** place the marked squares on the top left and bottom right corners before stitching.



Corner Unit — Make 2

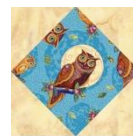


Reverse Corner Unit — Make 2

3. Repeat step 2 with marked squares on all corners of the remaining rust squares to make 8 rust units. Repeat with the remaining marked squares and the owl squares to make 14 owl units **except** press all seams toward the owl squares.



Rust Unit — Make 8



Owl Unit — Make 14

Completing the Quilt

1. Sew the 2 1/2" x remaining WOF navy diamonds strips short ends together. Press seams to one side. Stitch to the sides of the panel. Press seams toward the strips. Add the 2 1/2" x 35 1/2" strips to the top and bottom to complete the 35 1/2" x 42 1/2" framed panel. Press seams toward the strips.

2. Stitch 4 owl units top to bottom with 2 rust units to make a 7 1/2" x 42 1/2" side strip. Press seams open. Repeat to make a second side strip. Sew to the sides of the framed panel. Press seams toward the framed panel.

3. Sew 3 owl units side to side with 2 rust units and add a corner unit to 1 end and reverse (R) corner unit to the remaining end to complete the 7 1/2" x 49 1/2" top row. Press seams open between the owl and rust units and toward the corner units. Repeat to make the bottom row, paying close attention to the positioning of the units to keep the prints upright. Stitch to the top and bottom of the panel center to complete the 49 1/2" x 56 1/2" quilt center. Press seams toward the rows.



4. Stitch (2) 4" x remaining LOF navy diamonds strips short ends together, matching print at the seam as much as possible. Press seam to one side. Trim to 56 1/2". Repeat to make a second strip. Sew to the sides of the quilt center. Press seams toward the strips.

5. Sew 1 each 4" x WOF and 4" x remaining WOF navy diamonds strips short ends together. Press seam to one side. Trim to 56 1/2". Repeat to make a second strip. Stitch to the top and bottom of the quilt center to complete the top. Press seams toward the strips.

6. If using 44/45" backing fabric, remove the selvage edges from the backing pieces. Join the pieces on the long edges with a 1/2" seam allowance. Press seam open. Trim to make the 72" x 79" backing piece.

7. Layer the top with the backing and batting pieces. Quilt as desired. Trim batting and backing even with the top.

8. Join the aqua spot binding strips on the short ends with diagonal seams to make a long strip. Press seams in one direction. Press the strip in half along the length with wrong sides together. Bind the quilt edges using your favorite method to complete the quilt.